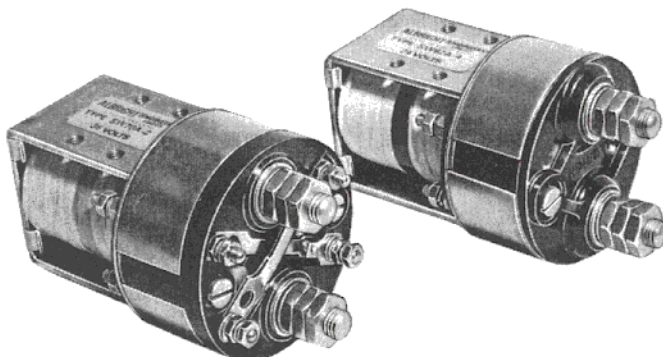


# D.C. SOLENOID SWITCH TYPES SW 62A AND SW 70A

SW62A — ON/OFF  
SW70A — ON/OFF WITH  
5 AMPERE AUXILIARY  
CONTACTS

## WEIGHTS

SW62A — 1.5 lbs (.68 Kg)  
SW70A — 1.6 lbs (.73 Kg)

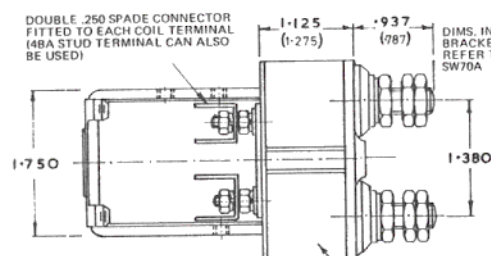


## RECOMMENDED RATINGS

At 24 volts D.C.

100 amperes continuous  
150 amperes intermittent

*Other ratings according  
to application and  
voltage.*

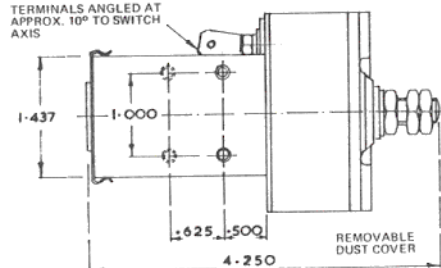


DOUBLE .250 SPADE CONNECTOR  
FITTED TO EACH COIL TERMINAL  
(4BA STUD TERMINAL CAN ALSO  
BE USED)

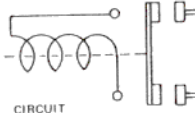
DIMS. IN  
BRACKETS  
REFER TO  
SW70A

FIXING HOLES, SIZE 2BA (.187 DIA)  
TWO THIS SIDE, FOUR ON THE  
OTHER SIDE

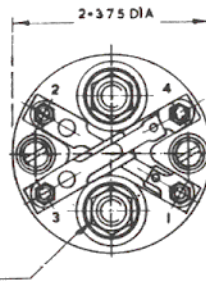
TERMINALS ANGLED AT  
APPROX. 10° TO SWITCH  
AXIS



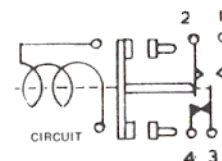
SW62A



CIRCUIT



SW70A



CIRCUIT

SWITCH CAN BE MOUNTED IN ANY  
POSITION. TWO FIXING SCREWS ARE  
SUFFICIENT FOR MOST APPLICATIONS.  
LENGTH TO BE .187 PLUS PANEL  
THICKNESS

DIMENSIONS IN INCHES

## METRIC EQUIVALENTS

Inches	mm
4.250	108.0
2.375	60.3
1.750	44.6
1.437	36.5
1.380	35.0
1.275	32.4
1.125	28.6
1.000	25.4
.937	23.8
.787	20.1
.625	15.9
.500	12.7
.313	8.0
.187	4.8
.141	3.3

These single pole, ON/OFF solenoid switches have double breaking main contacts and are suitable for the remote control of heavy currents. The switches, which are fully tropicalised, are also suitable for engine starting and will handle currents of 500 Amperes on 24 volts for periods of half a minute.

The operating coils can be wound for voltages from 6 to 240 and those for voltages of 100 and above are vacuum impregnated. Continuously rated windings are available if required.

Silver Tungsten contacts are used as standard but other materials such as Silver Cadmium Oxide or Pure Silver are available as alternatives.

The Auxiliary Contacts fitted to the SW.70A, which are rated at 5 Amperes, at 24 V.D.C. are available in the following configurations: one normally open and one normally closed, or two normally open or two normally closed.

Metric versions of these switches are also available