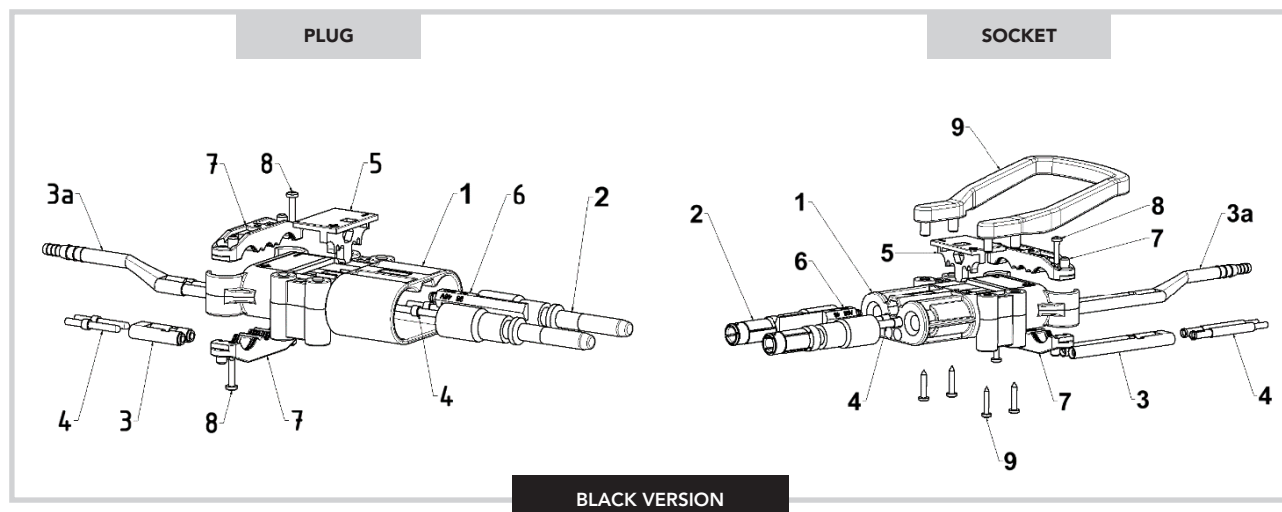


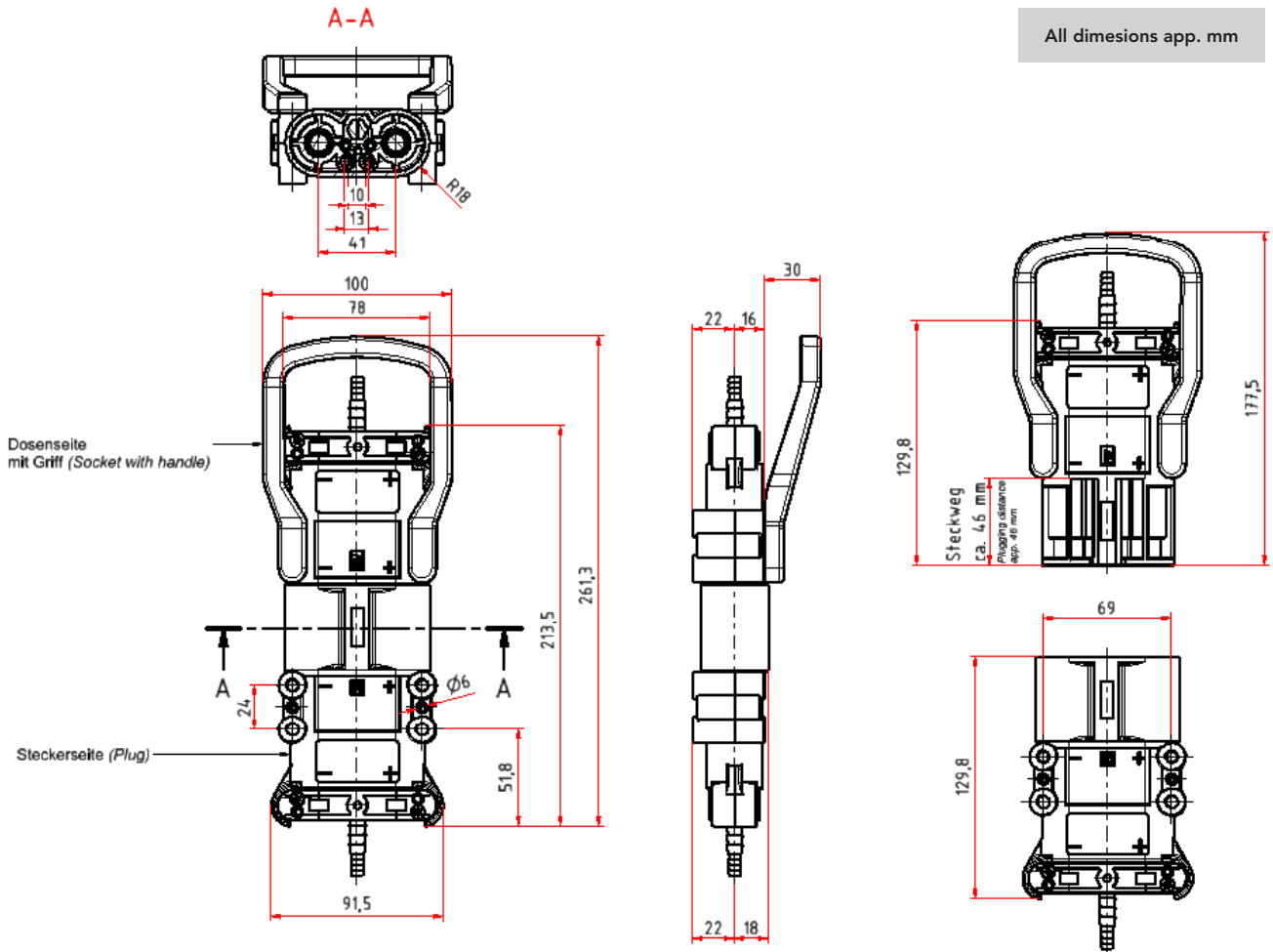
1. BASIC STRUCTURE / ORDER NUMBERS



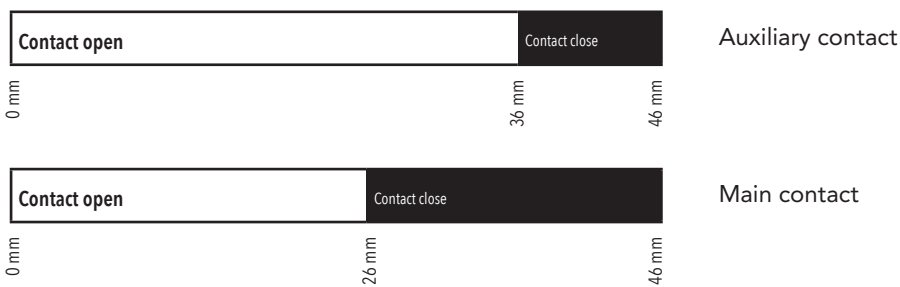
POS.	DESCRIPTION	PART-NO. PLUG	PART-NO. SOCKET
1	Housing >PA-GF<	100076	100079
2	Main contact 95 mm ²	111317	108780
2	Main contact 70 mm ²	108743	108775
2	Main contact 50 mm ²	108739	108772
3	Adapter for pilot contacts	100034	100033
3a	Airadapter	100467	100466
4+4a	Auxiliary- or pilot contact	102691	111208
5	Locking part black	100078	100077
6 ⁽¹⁾	Coding pin grey (wet + wet)	100015	100015
6 ⁽¹⁾	Coding pin green (dry)	100049	100049
6 ⁽¹⁾	Coding pin yellow (wet + dry)	100048	---
7	Cable clamp black (2x)	100080	100080
8	Screw (2x)	102665	102665
9	Handle black incl. screws	108602	108602

(1) see page 8

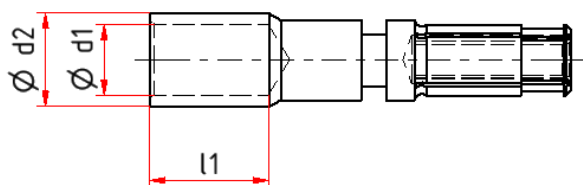
4. DRAWINGS



Plugging distance charts REMA Battery Connector DIN 320



Preparation wire acc. DIN VDE 0623-589



CROSS SECTION [mm ²]	$\varnothing d2$ [mm] -0,20	$\varnothing d1$ [mm] $\pm 0,1$	$l1$ [mm] +0,50
95	19,8	15,0	25,0
70	16,0	13,0	20,0
50	14,5	11,0	20,0