

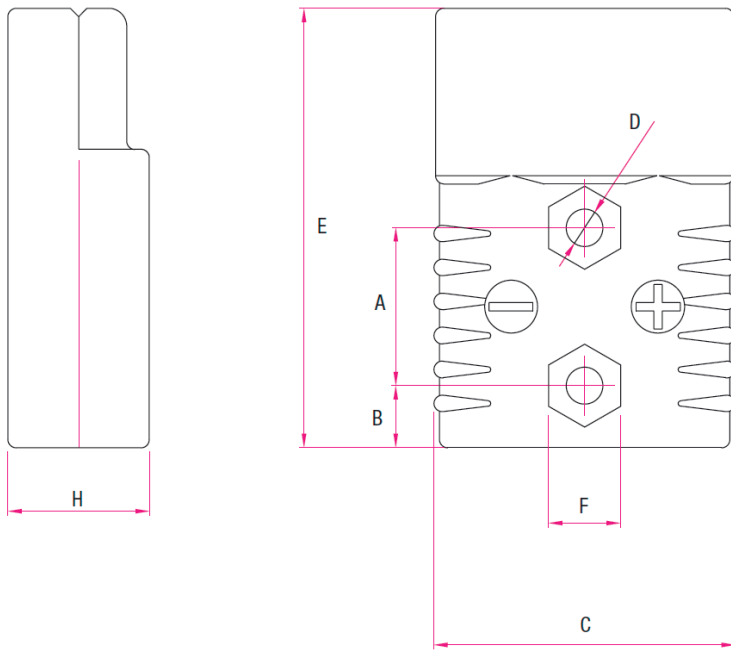
SR Connector 175

| | | SR-CONNECTOR 2-POLE complete with housing and 2 contacts | | | Housing without contacts (Pos 1) |
|----------|--------|---|----------|----------|-------------------------------------|
| | | AWG 4 | AWG 2 | AWG 1/0 | |
| COLOR | CODING | PART-NO. | PART-NO. | PART-NO. | PART-NO. |
| > Yellow | 12 V | 109335 | 109336 | 109337 | 109211 |
| > Orange | 18 V | 110909 | 111472 | 109334 | 102717 |
| > Red | 24 V | 109338 | 109339 | 109340 | 109212 |
| > Grey | 36 V | 109328 | 109329 | 109327 | 109208 |
| > Blue | 48 V | 109332 | 109333 | 109331 | 109209 |

Parts / accessories

| POS | | PART-NO. | PART-NO. | PART-NO. | |
|-----|----------------------------|----------|----------|----------|--|
| 2 | Contacts | 109360 | 109364 | 109363 | |
| 3 | Cable clamp | 102719 | 102719 | 102719 | |
| 4 | Handle grey without screws | 109391 | 109391 | 109391 | |
| 4 | Handle red without screws | 109399 | 109399 | 109399 | |
| 4 | Handle grey with 2 screws | 109392 | 109392 | 109392 | |
| 4 | Handle red with 2 screws | 109400 | 109400 | 109400 | |

4. DRAWINGS



| TYPE | A | | B | | C | | D | | E | | F | | H | |
|--------|------|--------|------|--------|------|--------|------|--------|-------|--------|------|--------|------|--------|
| | [mm] | [inch] | [mm] | [inch] | [mm] | [inch] | [mm] | [inch] | [mm] | [inch] | [mm] | [inch] | [mm] | [inch] |
| >SR50 | 19 | 0,75 | 6,2 | 0,25 | 35,7 | 1,38 | 4 | 0,16 | 48 | 1,89 | --- | --- | 15,8 | 0,62 |
| >SR175 | 28,6 | 1,13 | 11,2 | 0,44 | 54,9 | 2,16 | 6,6 | 0,26 | 79,5 | 3,13 | 13,0 | 0,51 | 25,4 | 1,00 |
| >SR350 | 28,5 | 1,12 | 34,7 | 1,37 | 70,0 | 2,75 | 7,0 | 0,28 | 107,5 | 4,23 | 13,0 | 0,51 | 33,2 | 1,30 |