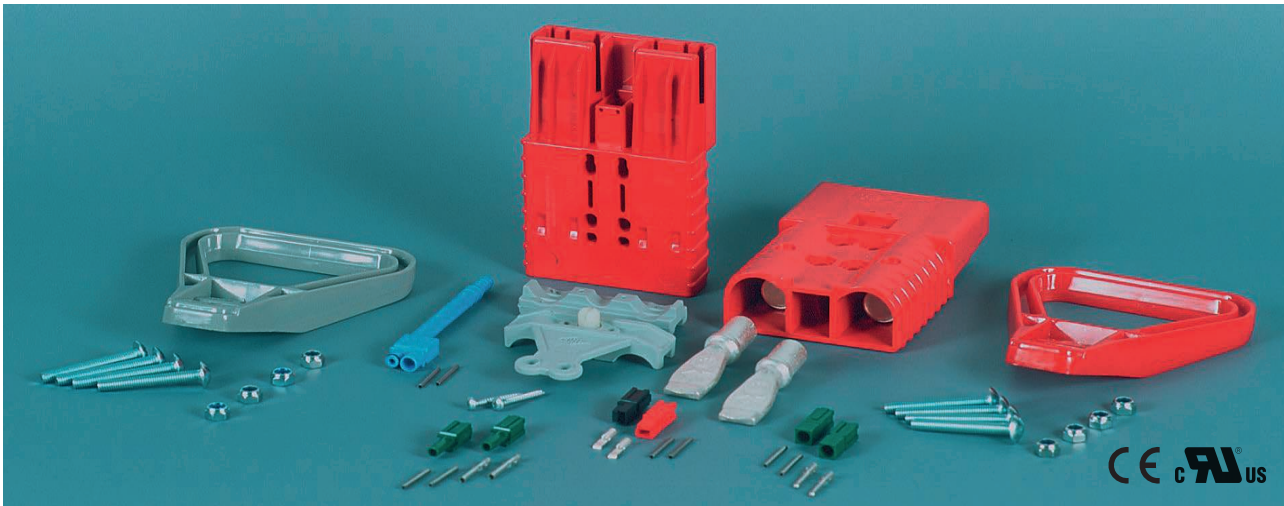


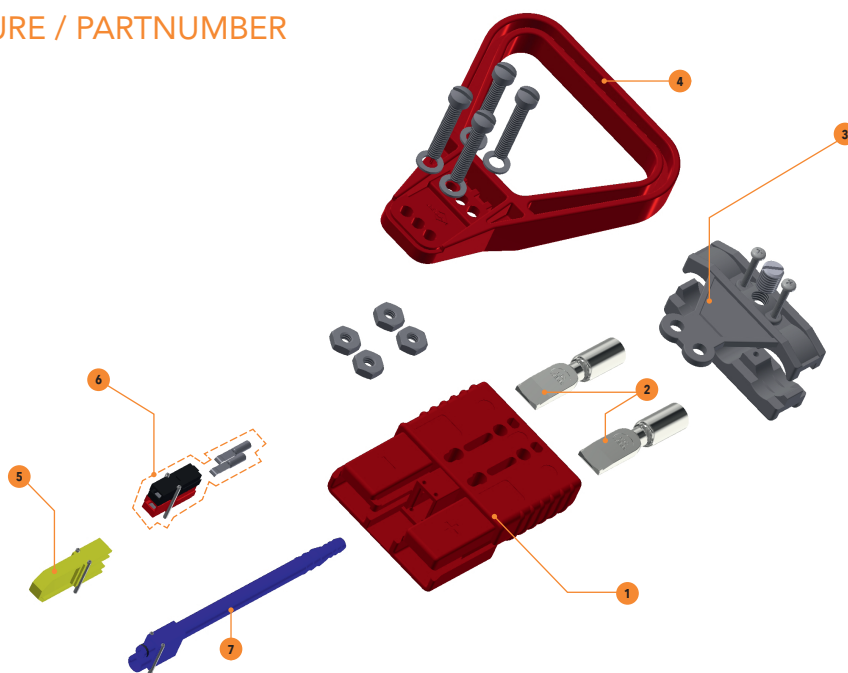
REMA FLAT BLADE CONTACT CONNECTORS SRE160 · SRE320 · SRX175 · SRX350



Product features and advantages

- > Reliable power connection solution for
 - > Electric vehicle batteries
 - > Battery chargers
 - > Forklift trucks
 - > Other DC voltage applications
- > Operating voltage determined by housing color
 - > Simplifies mating of same voltages
- > Plug and socket with identical housing design
 - > Reduces quantity of components
 - > Reduces purchasing and storage cost
- > Acid resistant housing material
- > Handels, strain relieves and auxiliary contacts optional
- > CE Marking & UL recognized
- > Contacts sized for AWG (American Wire Gauge) and metric cross sections
- > REMA developed high-grade contacts made out of pure high conductive Cu-ETP copper with silver plated surface and an anti-friction and tarnish coating ensure
 - > power transition with minimal losses
 - > long life
 - > suitable for crimping

1. STRUCTURE / PARTNUMBER



FLAT CONNECTORS SRE160 · SRX175

DESCRIPTION	CODING	SET PARTS	CROSS SECTION:	16mm ²	25mm ²	35mm ²	50mm ²
SRE160 complete red	24 V	1, 2	PART-NO.	109233	109228	109251	109229
SRE160 complete grey	36 V	1, 2	PART-NO.		109220	109238	109221
SRE160 complete blue	48 V	1, 2	PART-NO.	110907	109232	109264	109234
SRE160 complete black	80 V	1, 2	PART-NO.		109222	109242	109223

DESCRIPTION	CODING	SET PARTS	CROSS SECTION:	AWG1/0
SRX175 complete red	24 V	1, 2	PART-NO.	109250
SRX175 complete grey	36 V	1, 2	PART-NO.	109237
SRX175 complete blue	48 V	1, 2	PART-NO.	109241
SRX175 complete black	80 V	1, 2	PART-NO.	109265

ADDITION PARTS FLAT CONNECTORS SRE160 · SRX175

DESCRIPTION	POSITION	PART-NO.
cable clamp set	3	109201
Codierstift (gelb)	5	109252
aux contact set	6	109257
air adapter 6/8 mm	7	108035
aux contact set female (with coding)	8	102732
aux contact set male (with coding)	9	102733

HANDLE SRE160 · SRX175

DESCRIPTION	POSITION	PART-NO.	
handle grey angled 4 screws	4	PART-NO.	109393
handle red angled 4 screws	4	PART-NO.	109401
handle grey straight 4 screws	4	PART-NO.	109405

FLACHSTECKER SRE320 · SRX350

DESCRIPTION	CODING	SET PARTS	CROSS SECTION:	50mm ²	70mm ²	95mm ²	AWG2/0
SRE320 complete red	24 V	1, 2	PART-NO.	109446	109447	109449	109448
SRE320 complete grey	36 V	1, 2	PART-NO.	109438	109439	109441	109440
SRE320 complete blue	48 V	1, 2	PART-NO.	109442	109443	109445	109444
SRE320 complete black	80 V	1, 2	PART-NO.	109455	109456	109458	109457

DESCRIPTION	CODING	SET PARTS	CROSS SECTION:	AWG2/0
SRX350 complete red	24 V	1, 2	PART-NO.	109278
SRX350 complete grey	36 V	1, 2	PART-NO.	109272
SRX350 complete blue	48 V	1, 2	PART-NO.	109274
SRX350 complete black	80 V	1, 2	PART-NO.	109283

ADDITION PARTS FLAT CONNECTORS SRE320 · SRX350

DESCRIPTION	POSITION	PART-NO.	
cable clamp set	3	PART-NO.	109201
Codierstift (gelb)	5	PART-NO.	109252
aux contact set	6	PART-NO.	109257
air adapter 6/ 8 mm	7	PART-NO.	108036
aux contact set female (with coding)	8	PART-NO.	102732
aux contact set male (with coding)	9	PART-NO.	102733

HANDLE SRE320 · SRX350

DESCRIPTION	POSITION	PART-NO.	
handle grey angled 4 screws	4	PART-NO.	109393
handle red angled 4 screws	4	PART-NO.	109401
handle grey straight 4 screws	4	PART-NO.	109405

2. TECHNICAL SPECIFICATIONS

GENERAL

CONNECTOR MODEL	SRE160	SRE320	SRX175	SRX350
> Wire size	35mm ²	70mm ²	AWG1/0	AWG2/0
> Current rating I _N ⁽¹⁾	160 A	320 A	175 A	350 A
> Voltage rating	600 V	600 V	600 V	600 V
> Operating Temperature (incl. self-heating)	-20 °C ... +105 °C -4 °F ... +221 °F			

(1) depending on cross section and installation

MATERIAL HOUSING

	NORM	>PBT/PC-Blend<
> Halogen-free	DIN VDE 0472-815	ja
> Reaction to fire	UL 94	
> UV resistant		V-0
> Ozone resistant	EN 1175-1	ja
> Creepage current resistance	IEC 60112	225 V

MATERIAL DATA CONTACTS

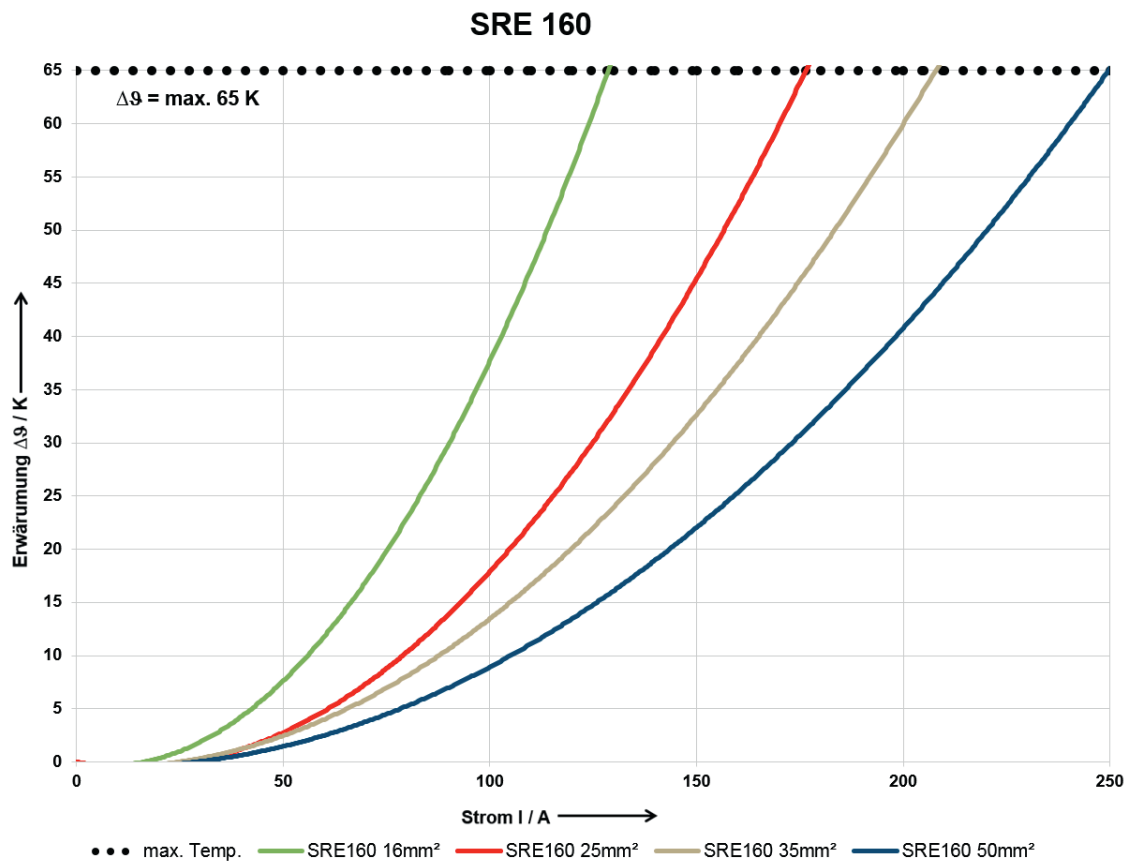
- > Electrolytic high conductive copper Cu-ETP acc. EN 13601 and silver plated surface

3. TEMPERATURE RISE CHARTS

SRE160

The REMA® SRE160 connector system is designed for optimum performance when used 35 mm² cable. The rated operating current is 160 A.

Depending on the cross section and the laying procedure, the current rating is changed.



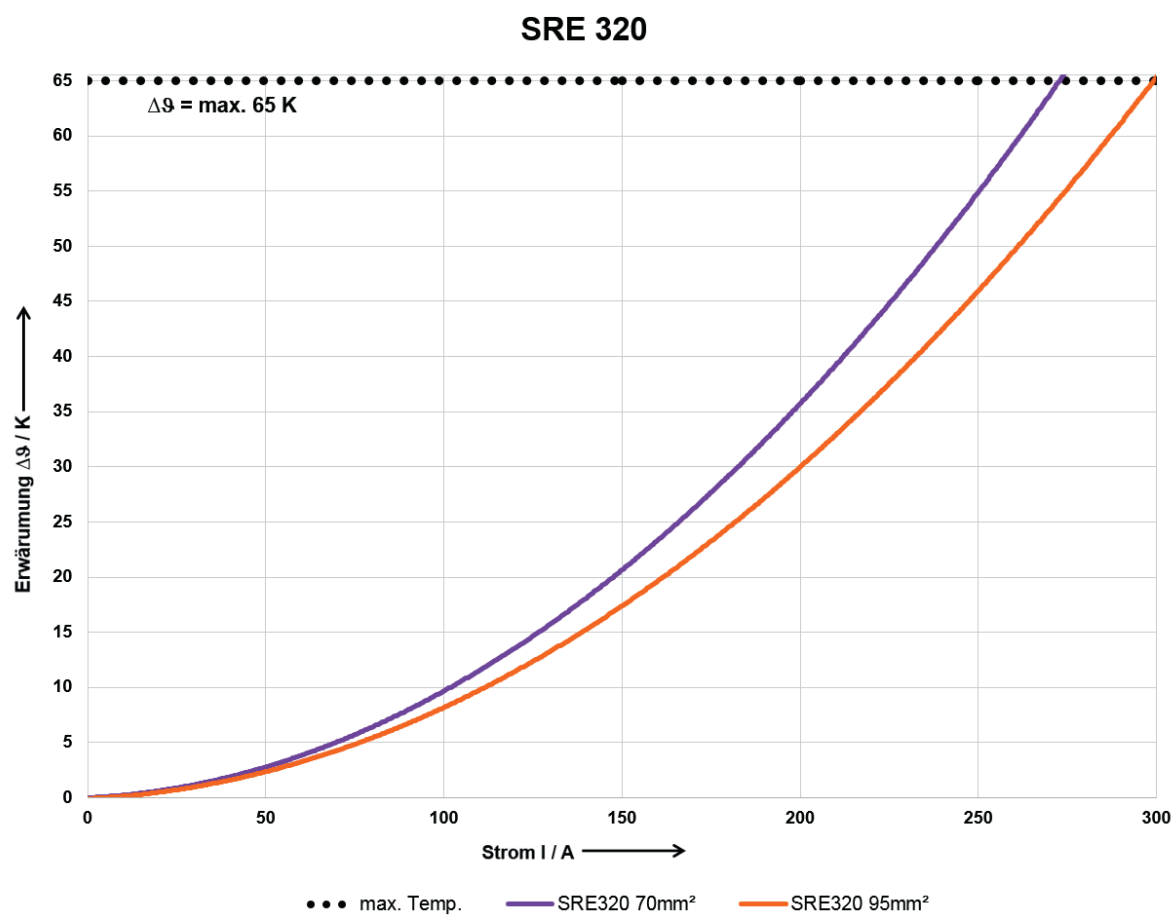
These following temperature rise curves are for reference. The actual thermal performance may vary depending upon environmental conditions.

Please contact REMA for additional information concerning the SRE160.

SRE320

The REMA® SRE320 connector system is designed for optimum performance when used 95mm² cable. The rated operating current is 320 A.

Depending on the cross section and the laying procedure, the current rating is changed.



These temperature rise curves are for reference.

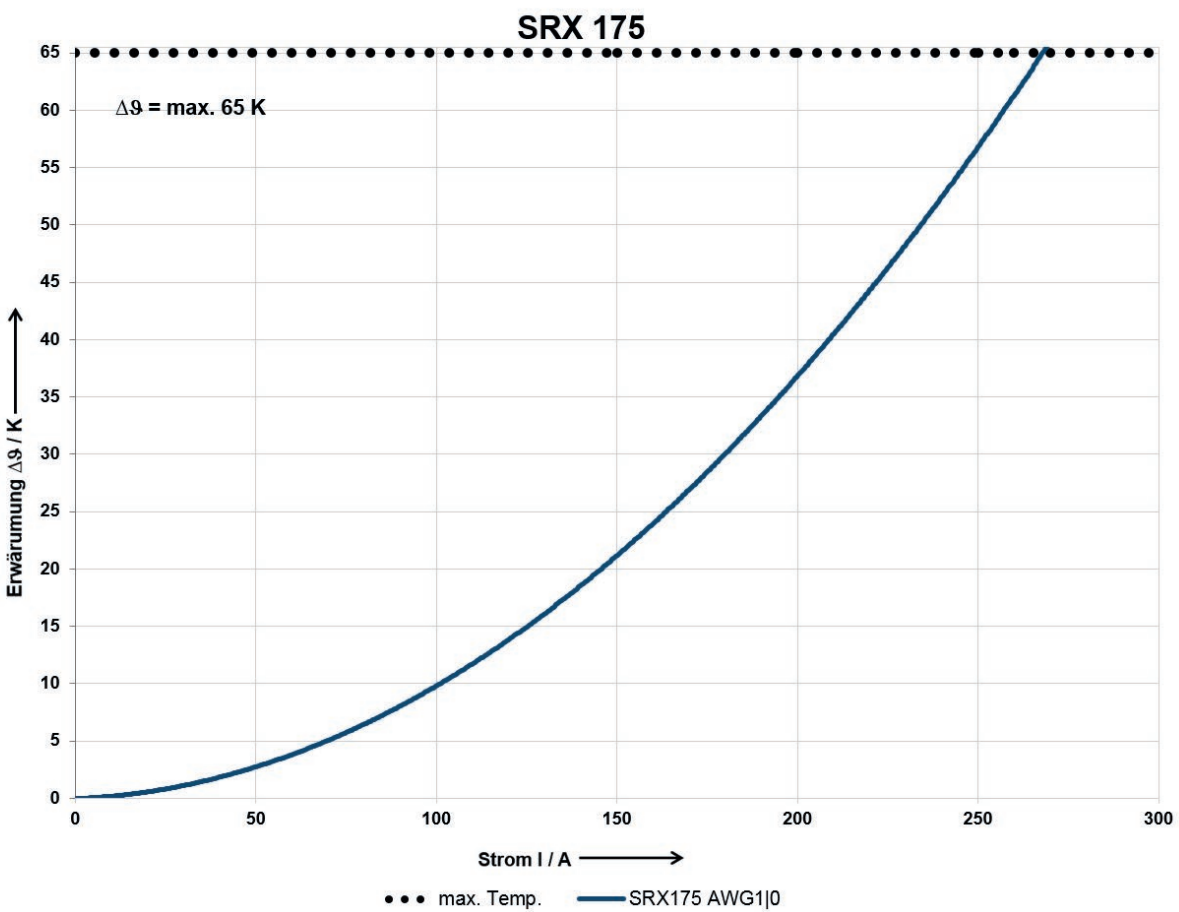
The actual thermal performance may vary depending upon environmental conditions.

Please contact REMA for additional information concerning the SRE320.

SRX175

The REMA® SRX175 connector system is designed for optimum performance when used 1/0 AWG cable. The rated operating current is 175 A.

Depending on the cross section and the laying procedure, the current rating is changed.



These temperature rise curves are for reference.

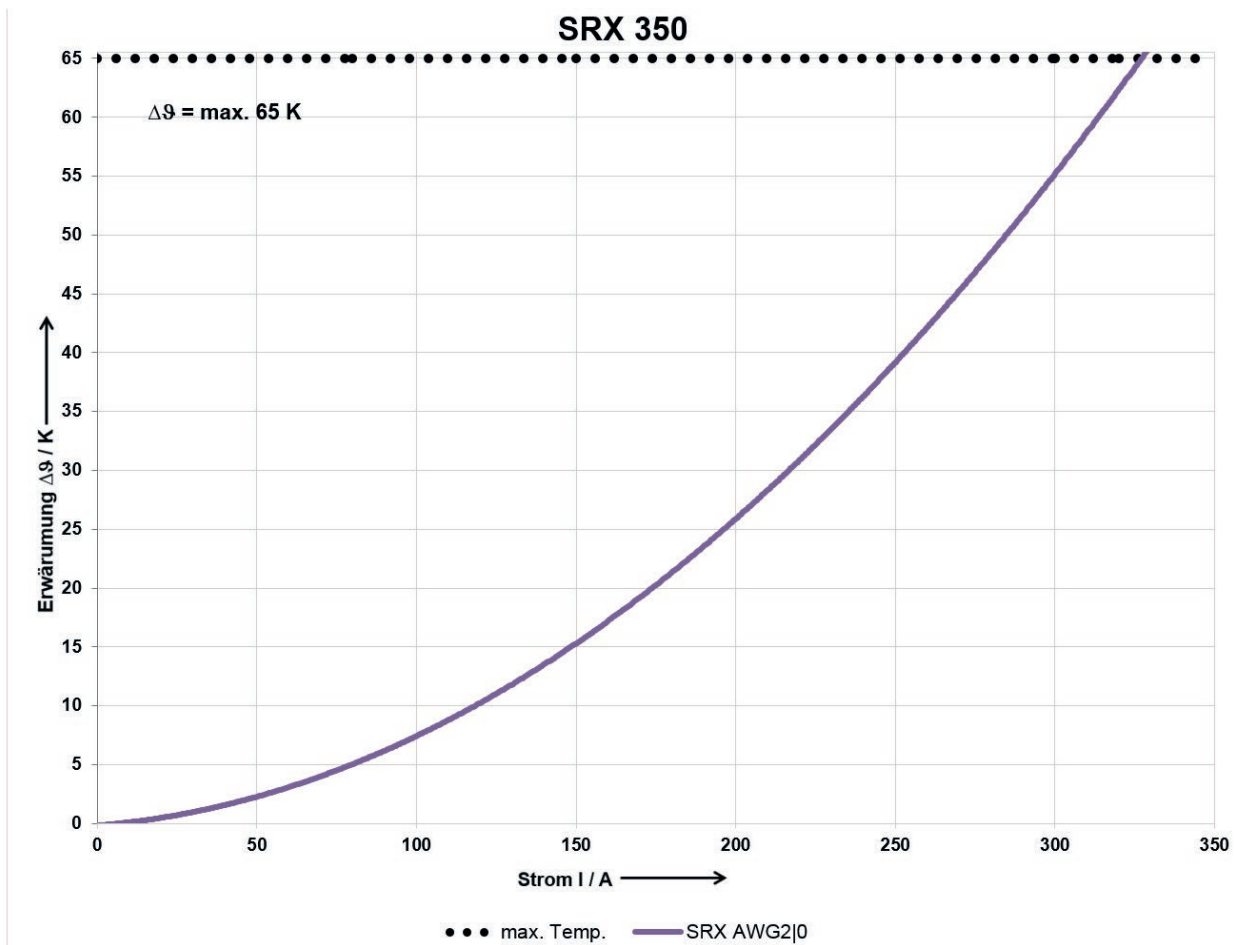
The actual thermal performance may vary depending upon environmental conditions.

Please contact REMA for additional information concerning the SRX175.

SRX350

The REMA® SRX350 connector system is designed for optimum performance when used 2/0 AWG cable. The rated operating current is 350 A.

Depending on the cross section and the laying procedure, the current rating is changed.

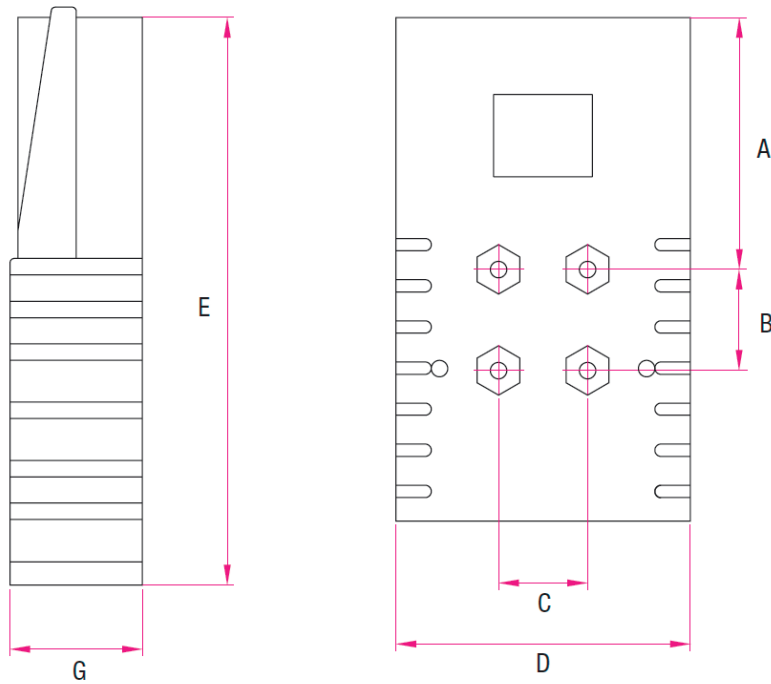


These temperature rise curves are for reference.

The actual thermal performance may vary depending upon environmental conditions.

Please contact REMA for additional information concerning the SRX350.

4. DRAWINGS



TYPE	A		B		C		D		E		G	
	[mm]	[inch]	[mm]	[inch]	[mm]	[inch]	[mm]	[inch]	[mm]	[inch]	[mm]	[inch]
>SRE160, SRX175	49,2	1,937	28,5	1,125	15,9	0,625	71,2	2,802	92,2	3,630	25,4	1,00
>SRE320, SRX350	61,9	2,437	28,5	1,125	15,9	0,625	85,7	3,374	125,4	4,937	33,3	1,312

5. GENERAL PROCESSING INFORMATION SRE160 · SRE320 · SRX175 · SRX350

Installation of contacts and connector by a qualified electrician in accordance with national and local electrical codes and the following instruction only. Crimp contact to the cables according to the´s assembly instructions. The following instructions serve as a reference.

➤ 1.Strip wire

- Select the correct strip length from table 1.
- Do not cut into cable strands!

➤ 2. Crimpverbindung an den Kabel

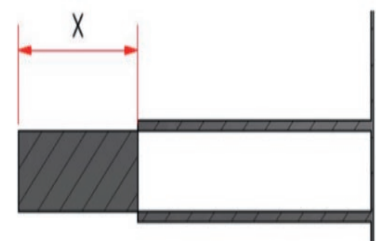
- Select contact from table 1.
- Use only suitable die sets!

➤ 3. Insert the wired contact into the rear of the hosing according to picture 2

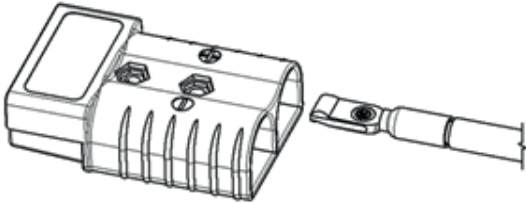
- Make sure that the smooth contour of the contact is upwards so that the contact underside moves over the housing spring (picture 2) and is retained with an audible click.
- To check engagement, pull gently on the cable to make sure contact is correctly locked over the housing spring.

Table 1: Overview Table

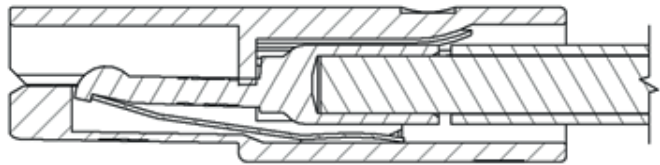
TYPE	Contact Part-No.	Wire Size AWG or mm ²	„X“ in mm acc. pic. 1	X“ in inches acc. pic. 1
➤SRE160	109382	16 mm ²	20	0,78
➤SRE160	109378	25 mm ²	20	0,78
➤SRE160	109380	35 mm ²	20	0,78
➤SRE160	109376	50 mm ²	20	0,78
➤SRX175	109374	1/0 AWG	26	1,02
➤SRE320	102756	35 mm ²	20	0,78
➤SRE320	109199	50 mm ²	20	0,78
➤SRE320	109384	70 mm ²	20	0,78
➤SRE320	109389	95 mm ²	24	0,94
➤SRX350	109385	2/0 AWG	31	1,22



Picture1: Strip length



Picture 2: Assembly of wired contact into housing



Picture 3: Installed contact into housing

Disassembly

- > Switch off power the contact according to DIN EN 60079-14 when dis-assembling the contact.
- > Remove contact by pressing the spring at the front of the connector with a small insulated screwdriver. Simultaneous while pressing the spring, pull gently on the cable to remove the contact from the housing.



SAFETY NOTE

Lay the cables free of tension!
 In torsional and / or tensile forces in the cable using the cable clamp REMA SRE / SRX is recommended.
 Part No.: 109201



6. DIE SETS

General processing information

- Please only use suitable REMA die sets. Only those guarantee a secure electrical connection.
- Please actuate die sets always until the end.
- Only process contacts with clean sleeves. The contaminated crimpsleeves increase the contact resistance and may lead to overheating.
- Please always set the die sets centred on the crimp sleeves.

Hydraulic tool pliers set HP60 Type H60 - Die Sets

- Indent crimping press area 6 – 70 mm²
- Double indent crimping press area 16 – 70 mm²

Set Part-No. 107138

Set Part-No. 113032



Typ C130 - die sets

- Indent crimping press area 10 – 95 mm²
- Souple indent crimping press area 10 – 240 mm²



For further questions, please contact your REMA Sales department.

Selection of deliverable range of die sets type C130

CROSS SECTION	TYPE OF DIE SET	PART-NO.
10 mm ²	indent	104219
16 mm ²	indent	111092
25 mm ²	indent	111093
35 mm ²	indent	111094
50mm ²	indent	111095
70 mm ²	indent	111096
95 mm ²	indent	111097

CROSS SECTION	TYPE OF DIE SET	PART-NO.
10 mm ²	double indent	107181
16 mm ²	double indent	107182
25 mm ²	double indent	107187
35 mm ²	double indent	107191
50 mm ²	double indent	107196
70 mm ²	double indent	107201
95 mm ²	double indent	107204
120 mm ²	double indent	107208
240 mm ²	double indent	107212

Selection of deliverable range of die sets type H60

CROSS SECTION	TYPE OF DIE SET	PART-NO.
6 mm ²	indent	110676
10 mm ²	indent	107264
16 mm ²	indent	107265
25 mm ²	indent	107266
35 mm ²	indent	107267
50 mm ²	indent	107268
70 mm ²	indent	112717

CROSS SECTION	TYPE OF DIE SET	PART-NO.
16 mm ²	double indent	107270
25 mm ²	double indent	107271
35 mm ²	double indent	107272
50 mm ²	double indent	107273
70 mm ²	double indent	112714

7. POWER CABLE

The cables of the REMA Flat Blade Contact Connectors are extra fine-wired flexible copper cables according to EN 60228 / class 6.

CROSS SECTION	CABEL PART-NO.	
10 mm ²	REMA Flex® 104750	H01N2-D 103115
16 mm ²	REMA Flex® 103117	H01N2-D 103117
25 mm ²	REMA Flex® 103122	H01N2-D 103121
35 mm ²	REMA Flex® 103125	H01N2-D 103124
50 mm ²	REMA Flex® 103130	H01N2-D 103528
70 mm ²	REMA Flex® 103132	H01N2-D 110428
95 mm ²	REMA Flex® 103135	H01N2-D 103133
120 mm ²	Frötec Kabel 104353	Lapp Kabel 104705
240 mm ²		H01N2-D 104354
AWG 4/0	cobra wire AWG 4/0	cobra wire AWG 4/0

On request, we are happy to evaluate your special cables and submit an offer for crimp validation.