



7. Hardware

Synchro Footblocks

Synchro Footblocks feature alloy cheeks, fixing isolators, and a moulded base plate to prevent sealant ingress into the sheave.

- Standard and jammer options can be double stacked
- Two-step jammer action keeps lever close to side of the block
- Optimised jammer shape holds line central on the sheave
- Tough alloy cheeks
- Synchro sheave loads match the same sized blocks

Jamming footblocks are designed to hold light hand loads only.

- Twin fixings with inserts
- Wide head for a solid base, block will not "roll" on the deck
- Moulded base plate with recess to hold sealant around fixing screws and prevent ingress onto the bearing and sheave

Aluminium Footblock



PART NO	SHEAVE Ø	WORKING LOAD LIMIT		WEIGHT	
		Kg	lb	g	oz
29926061BK	60	800	1764	162	5.70
29927261BK	72	1200	2645	229	8.10
29929061BK	90	2000	4409	430	15.20

Use M8 (5/16) fixings for the 60/72mm sheaves
and M10 for the 90mm sheaves - Not included

Also available in grey (remove BK)

Aluminium Footblock with Jammer

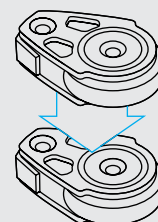
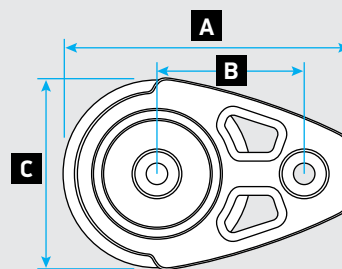


PART NO	SHEAVE Ø	WORKING LOAD LIMIT		WEIGHT	
		Kg	lb	g	oz
29926064BK	60	800	1764	190	6.70
29927264BK	72	1200	2645	250	8.80
29929064BK	90	2000	4409	480	16.90

Use M8 (5/16) fixings for the 60/72mm sheaves
and M10 for the 90mm sheaves - Not included

Synchro Footblock Footprint

PART NO	A		B		C	
	mm	in	mm	in	mm	in
60mm Footblock	98.0	3 ⁷ / ₈	51.0	2	59	2 ³ / ₁₆
72mm Footblock	110.6	4 ⁵ / ₁₆	58.0	2 ⁵ / ₁₆	71	2 ¹³ / ₁₆
90mm Footblock	134.0	5 ¹ / ₁₆	69.0	2 ¹¹ / ₁₆	89	3 ¹ / ₂



Standard and jammer options
can be double stacked
The upper sheave should not
be loaded beyond 60% of WLL