



7. Hardware

Genoa T-Track Cars

T-Track is widely used on cruising boats where car sheeting positions change frequently.

All Lewmar Track cars fit the industry standard 32mm (1 1/4"). The cars are available in three styles and cover three different loading levels to suit boats from 9m (30ft) up to 15.5m (50ft).

- Precision Workmanship
- Three Styles
- Simple to fit
- Low Maintenance



Genoa Plunger Car



| PART NO | SIZE | WORKING LOAD LIMIT | | LENGTH | | WIDTH | | WEIGHT | |
|----------|------|--------------------|------|--------|---------|-------|-------|--------|------|
| | | kg | lb | mm | in | mm | in | g | oz |
| 29041700 | 1 | 900 | 1980 | 111 | 4 3/8 | 56 | 2 1/4 | 540 | 19.1 |
| 29042700 | 2 | 1500 | 3300 | 120 | 4 11/16 | 56 | 2 1/4 | 719 | 25.3 |
| 29043702 | 3 | 2350 | 5170 | 170 | 6 3/4 | 56 | 2 1/4 | 1199 | 47.3 |

Car with Shackle and Plunger



| PART NO | SIZE | WORKING LOAD LIMIT | | LENGTH | | WIDTH | | WEIGHT | |
|----------|------|--------------------|------|--------|---------|-------|-------|--------|------|
| | | kg | lb | mm | in | mm | in | g | oz |
| 29172117 | 2 | 1500 | 3300 | 120 | 4 11/16 | 56 | 2 1/4 | 480 | 17.0 |

Tri-Roller Genoa Car



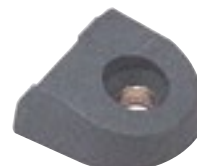
| PART NO | SIZE | WORKING LOAD LIMIT | | LENGTH | | WIDTH | | WEIGHT | |
|----------|------|--------------------|------|--------|-------|-------|-------|--------|------|
| | | kg | lb | mm | in | mm | in | g | oz |
| 29442705 | 2 | 1500 | 3300 | 147 | 5 3/4 | 64 | 2 1/2 | 767 | 27.1 |

Control Line End Stop



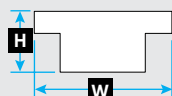
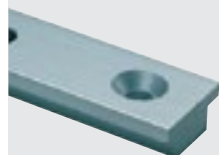
| PART NO | WEIGHT | |
|----------|--------|-----|
| | g | oz |
| 29172015 | 120 | 4.2 |

Track End Stop



| PART NO | WEIGHT | |
|----------|--------|-----|
| | g | oz |
| 29172016 | 19 | 0.7 |

T-Track Specification



| PART NO | NOMINAL LENGTH | | H HEIGHT | | W WIDTH | | WEIGHT (PER METRE) | | CENTRE HOLE | | FIXINGS | |
|----------|----------------|-------|-----------------|-----|----------------|-------|--------------------|------|-------------|---------|---------|----------|
| | m | ft | mm | in | mm | in | mm | in | g | oz | Metric | Imperial |
| 29166215 | 1.5 | 4'11" | | | | | | | | | | |
| 29166225 | 2.5 | 8'2" | 15 | 5/8 | 32 | 1 1/4 | 865 | 30.5 | 100 | 3 15/16 | CSK M8 | 5/16" |
| 29166230 | 3.0 | 9'10" | | | | | | | | | | |