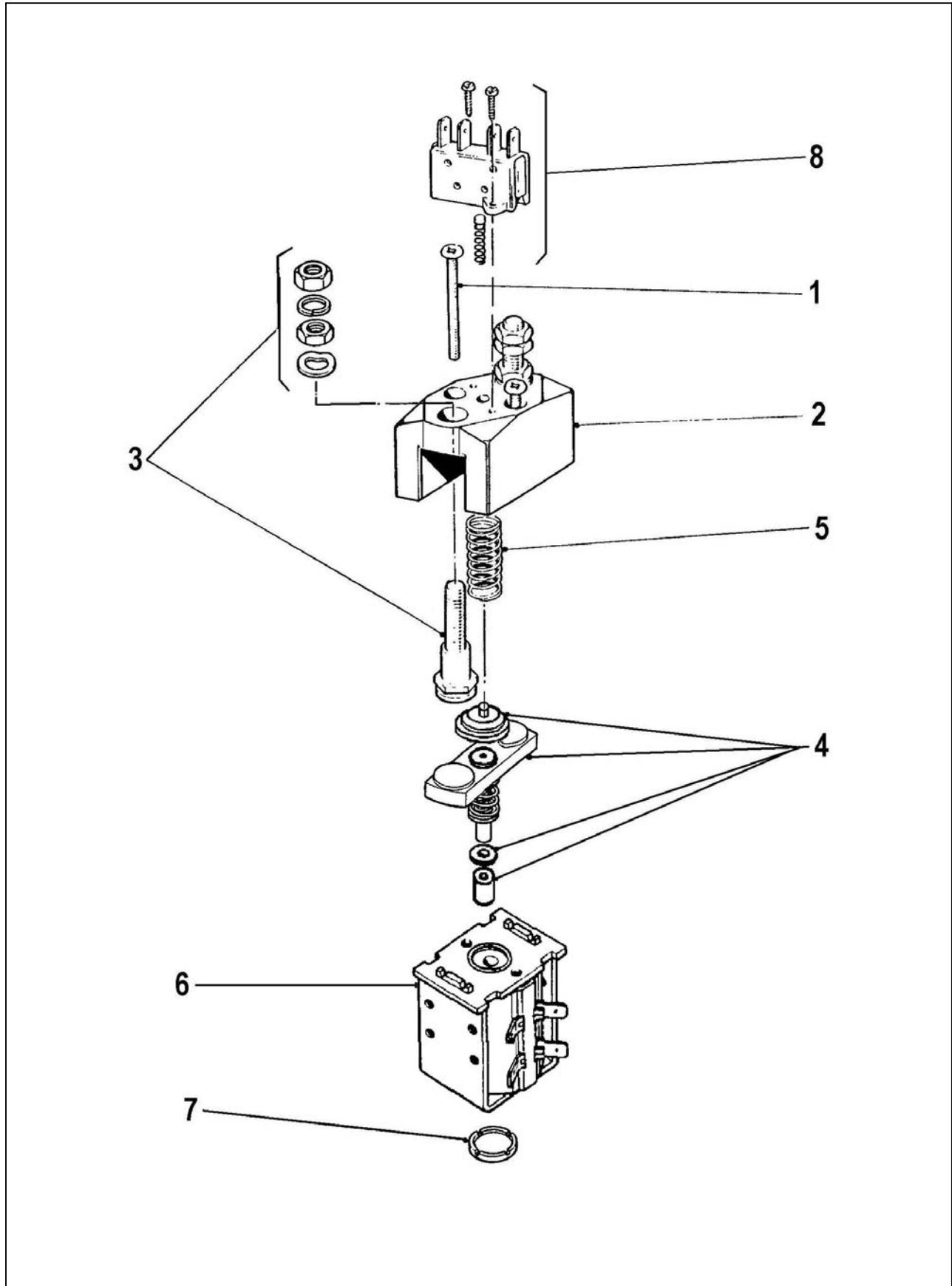




SPARE PARTS FOR
SOLENOID SWITCH TYPE
SU280



Spare parts for Solenoid Switch type SU280

Suffix 'A' indicates contactor built with Auxiliary Contacts.

Suffix 'B' indicates contactor built with Permanent Magnetic Blowouts.

SU280

Item	Part No.	Description	Quantity
1	2180-38	Top Cover Fixing Screw.	2
2	2181-632	Top Cover Moulding (SU280)	1
	2181-674	Top Cover Moulding (SU280B)	1
	2181-632B	Top Cover Moulding (SU280A)	1
	2181-674E	Top Cover Moulding (SU280AB)	1
2A	2181-632A	Top Cover Moulding Enclosed – Optional (SU280)	1
	2181-674A	Top Cover Moulding Enclosed – Optional (SU280B)	1
	2181-632C	Top Cover Moulding Enclosed – Optional (SU280A)	1
	2181-674D	Top Cover Moulding Enclosed – Optional (SU280AB)	1
3	2155-812	Fixed Contact Assembly.	2
2 & 3	2181-633	Top Cover Moulding with Fixed Contacts (SU280)	1
	2181-633G	Top Cover Moulding with Fixed Contacts (SU280B)	1
	2181-633D	Top Cover Moulding with Fixed Contacts (SU280A)	1
	2181-633K	Top Cover Moulding with Fixed Contacts (SU280AB)	1
2A & 3	2181-633A	Top Cover Moulding Enclosed with Fixed Contacts (SU280)	1
	2181-633F	Top Cover Moulding Enclosed with Fixed Contacts (SU280B)	1
	2181-633J	Top Cover Moulding Enclosed with Fixed Contacts (SU280A)	1
	2181-633E	Top Cover Moulding Enclosed with Fixed Contacts (SU280AB)	1
4	2155-587	Moving Contact Assembly.	1
5**	2065-43__	Return Spring	1
6**	2180-40__	Assembled Magnet Frame & Coil.	1
7	2180-246	End Cap	1
8	2155-352	Auxiliary Contact Kit (SU280A)	1

**When ordering these items, please state full type number of contactor for which items are required.

Note: M10 nuts to item 3 should be tightened to a torque of 13.4 to 14.6 Nm.



ALBRIGHT INTERNATIONAL LTD
125 RED LION ROAD - SURBITON
SURREY KT6 7QS - ENGLAND
TEL: +44 (020) 8390 5357
FAX: +44 (020) 8390 1927
WEBSITE: www.albright.co.uk