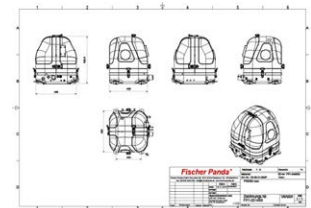


Panda 5000i.Neo PMS



General Technical Data

Model.:	Panda 5000i.Neo PMS
Generator Type	Panda i-Series (50 Hz)
Generator Family	5000i.Neo
Generator Version.:	PMS
Article number.:	0000227 (<2017 : 03.05.01.080P)
Additional Features	

Area of Application.:	Marine Generator (M)
Frequency [Hz]	50
Generator manufacturer	Fischer Panda GmbH
Isolation class of windings	H
Nominal Speed [rpm]	2200-2800 rpm
Voltage Regulation	iControl2
Power rating factor Cos Pi	0.80

Electrical Alternator

Single Phase Version

Single Phase Version with Inverter Technology

Engine Speed [rpm]	2200 - 2800
Nominal Voltage in Volt	230
Nominal Performance in kW ¹⁾	0-4.00
Nominal Performance in kVA ¹⁾	0-5.0
Continuous Performance in kW ¹⁾	0-3.6
Continuous Performance in kVA ¹⁾	0-4.5
Number of Phases	1
Max. Rated Inrush Current in Ampere	
Frequency [Hz]	50

1) cosPhi 0,8 up to 40°C ambient temperature, otherwise cosPhi 1 up to 50°C

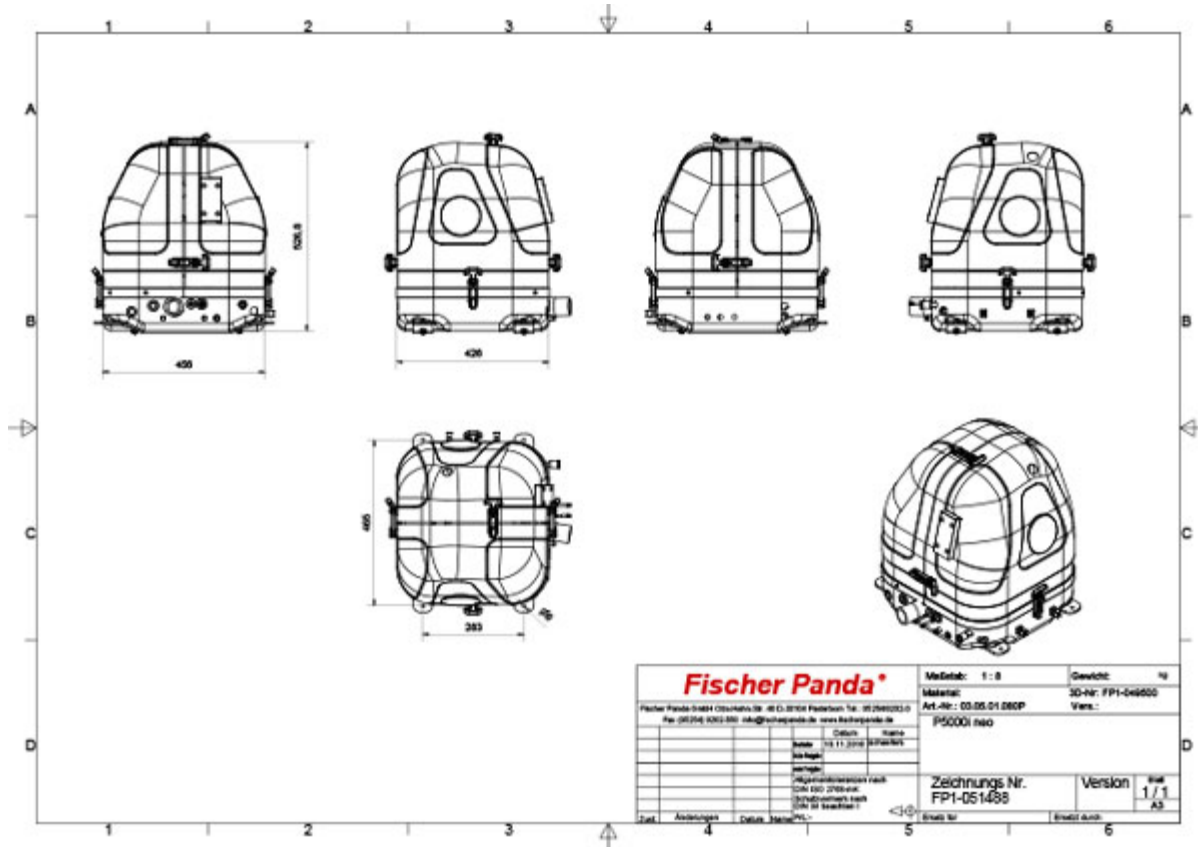
All performance data applies to generator operation at 100m above sea level at 20°C. Performance reductions can occur when operating at greater heights.

Engine Data

Engine Manufacturer	Fischer Panda GmbH (FP)
---------------------	-------------------------

Engine Type	FP320
No. Cylinders	1
Displacement [cm ³]	309
Starter System	12V

Sound Insulation Cover (Generator Housing / Sound Shield)



Version	GFK 3D
Article Number	0000227 =< 2016 (03.05.01.080P) CAD REF:0013348
Drawing Ref.	FP1-051488

Sound Cover Type	GFK (Glass fibre reinforced polyester)
Sound Insulation Material	3D
Dimensions Housing L x W x H *) **)	Refer to Capsule Drawing of Sound Shield
Total Weight of Generator with Capsule	Refer to Capsule Drawing of Sound Shield
Sound Cover Upgrade Options (on request)	->MPL 4DS

Disclaimer


All technical data and specifications including dimensions, performance data, weight and material specifications are only valid when they are explicitly expressed in writing. All data should be considered only for approximation purposes because the data from these sources is gathered from current and previous models. As a result of continual product improvement and modification, the validity of technical data from these sources cannot be guaranteed. 3D-models are only provided on special request. It is the responsibility of the customer to ensure in all cases when ordering that technical data is valid and that the specifications meet his/her requirements.

*) The dimensions are for the sound insulation housing ONLY and do not include additional parts or fittings such as fasteners, closures or mounting brackets etc.

Therefore please note: You must consider the additional space will need to be calculated for the installation. This is of importance when planning the installation with respect of cables, hoses and mounting feet.

**) Generators with DVS windings are slightly longer than those with HP1 or HP3 windings. Specific dimensions are available on request.

Documentation

<input type="checkbox"/>	Handbook / Operators Manual : (FPO1-0009259)	
<input type="checkbox"/>	Handbuch / Bedienungsanleitung : (FPO1-0009258)	
<input type="checkbox"/>	High Resolution Image: Panda 5000i.Neo PMS (5000iNeo p1 3d capped transP1540659.JPG)	
<input type="checkbox"/>	High Resolution Image: Panda 5000i.Neo PMS (5000iNeo p2 P1540650.JPG)	
<input type="checkbox"/>	High Resolution Image: Panda 5000i.Neo PMS (5000iNeo p3 P1540640.JPG)	



General information, brochures and flyers can be found in the "Download" area

Service- / installation kits and shock mountings

Note: Actual Service- / installation kits and shock mountings may differ from those displayed depending on Generator type.

Service kit

0015691



Service Kit "PLus"



Installation Kit Basic (without exhaust/water separator)

0000677



Installation kit Premium (with exhaust/water separator)

0000674



Shock-mounting, captive

0002750



Shock-mounting, non-captive

0009669

